

PHIFER

EXTERIOR SUN CONTROL
FABRIC

SUNTEX® 80/90

WEAVING
EXCELLENCE
WITH
INNOVATION



SunTex® 80/90

BY PHIFER

| SOLAR OPTICAL PROPERTIES | | | | | SHGC/G VALUE g-tot (glass & blind) | | | | | |
|--|----|----|----|----|---------------------------------------|--------|--------|------------|------|------|
| | | | | | SINGLE | | | INSULATING | | |
| Color | TS | RS | AS | TV | 1/8 CL | 1/4 CL | 1/4 HA | 1/2 CL | 1 CL | 1 HA |
| SUNTEX® 80 Zero Degree Profile Angle • Fabrics Installed Externally | | | | | | | | | | |
| Brown | 28 | 4 | 68 | 37 | 0.32 | 0.32 | 0.30 | 0.28 | 0.28 | 0.23 |
| Black | 28 | 4 | 68 | 37 | 0.32 | 0.32 | 0.30 | 0.28 | 0.28 | 0.23 |
| Grey | 28 | 23 | 49 | 36 | 0.30 | 0.30 | 0.28 | 0.26 | 0.25 | 0.22 |
| Stucco | 31 | 38 | 31 | 36 | 0.31 | 0.30 | 0.29 | 0.27 | 0.26 | 0.23 |
| Beige | 32 | 30 | 38 | 39 | 0.33 | 0.32 | 0.30 | 0.29 | 0.27 | 0.23 |
| Dark Bronze | 28 | 5 | 67 | 38 | 0.32 | 0.31 | 0.30 | 0.28 | 0.26 | 0.23 |
| SUNTEX® 80 30 Degree Profile Angle • Fabrics Installed Externally | | | | | | | | | | |
| Brown | 26 | 4 | 70 | 37 | 0.30 | 0.30 | 0.28 | 0.26 | 0.25 | 0.22 |
| Black | 26 | 4 | 70 | 37 | 0.30 | 0.30 | 0.28 | 0.26 | 0.25 | 0.22 |
| Grey | 26 | 23 | 51 | 36 | 0.29 | 0.28 | 0.26 | 0.24 | 0.23 | 0.21 |
| Stucco | 30 | 38 | 32 | 36 | 0.30 | 0.30 | 0.28 | 0.26 | 0.25 | 0.22 |
| Beige | 31 | 30 | 39 | 39 | 0.32 | 0.31 | 0.30 | 0.28 | 0.27 | 0.23 |
| Dark Bronze | 26 | 5 | 69 | 38 | 0.30 | 0.30 | 0.28 | 0.26 | 0.25 | 0.22 |
| SUNTEX® 90 Zero Degree Profile Angle • Fabrics Installed Externally | | | | | | | | | | |
| Brown | 13 | 5 | 82 | 18 | 0.20 | 0.20 | 0.19 | 0.17 | 0.16 | 0.15 |
| Black | 14 | 4 | 82 | 19 | 0.21 | 0.21 | 0.20 | 0.17 | 0.17 | 0.15 |
| Grey | 14 | 27 | 59 | 18 | 0.18 | 0.18 | 0.17 | 0.16 | 0.15 | 0.13 |
| Stucco | 18 | 44 | 38 | 20 | 0.20 | 0.20 | 0.18 | 0.17 | 0.17 | 0.15 |
| Beige | 17 | 36 | 47 | 20 | 0.20 | 0.20 | 0.18 | 0.17 | 0.17 | 0.15 |
| Dark Bronze | 13 | 5 | 82 | 18 | 0.20 | 0.20 | 0.19 | 0.17 | 0.16 | 0.15 |
| SUNTEX® 90 30 Degree Profile Angle • Fabrics Installed Externally | | | | | | | | | | |
| Brown | 12 | 5 | 83 | 18 | 0.19 | 0.19 | 0.18 | 0.16 | 0.15 | 0.14 |
| Black | 12 | 4 | 84 | 19 | 0.19 | 0.19 | 0.18 | 0.16 | 0.15 | 0.14 |
| Grey | 13 | 27 | 60 | 18 | 0.17 | 0.17 | 0.16 | 0.15 | 0.14 | 0.13 |
| Stucco | 17 | 44 | 39 | 20 | 0.19 | 0.19 | 0.17 | 0.16 | 0.16 | 0.14 |
| Beige | 16 | 36 | 48 | 20 | 0.19 | 0.19 | 0.18 | 0.16 | 0.16 | 0.14 |
| Dark Bronze | 12 | 5 | 83 | 18 | 0.19 | 0.19 | 0.18 | 0.16 | 0.15 | 0.14 |



PROTECTION THAT LIVES ON
MICROBAN®
 Microban® antimicrobial protection inhibits the growth of stain-causing bacteria, mold and mildew on the shade.



MIF SEAL OF APPROVAL



TS = Solar Transmittance
 RS = Solar Reflectance
 AS = Solar Absorptance
 TV = Visual Transmittance

SHGC = Solar Heat Gain Coefficient

1/8 CL = 1/8" Clear Glass
 1/4 CL = 1/4" Clear Glass
 1/4 HA = 1/4" Heat Absorbing Glass
 1/2 CL = 1/2" Insulating Clear Glass
 1 CL = 1" Insulating Clear Glass
 1 HA = 1" Insulating Heat Absorbing Glass

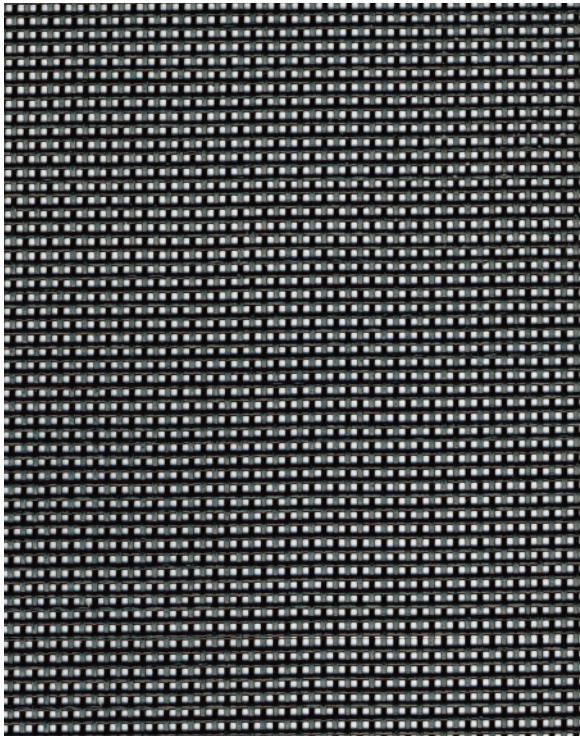
The solar optical properties are used to calculate the solar heat gain coefficient (SHGC). The SHGC represents the percentage of solar heat gain that is transmitted to the interior through the glass and shading system. Dark colors provide maximum glare reduction and visibility.

For additional performance values, test references and technical definitions visit us at phifer.com.

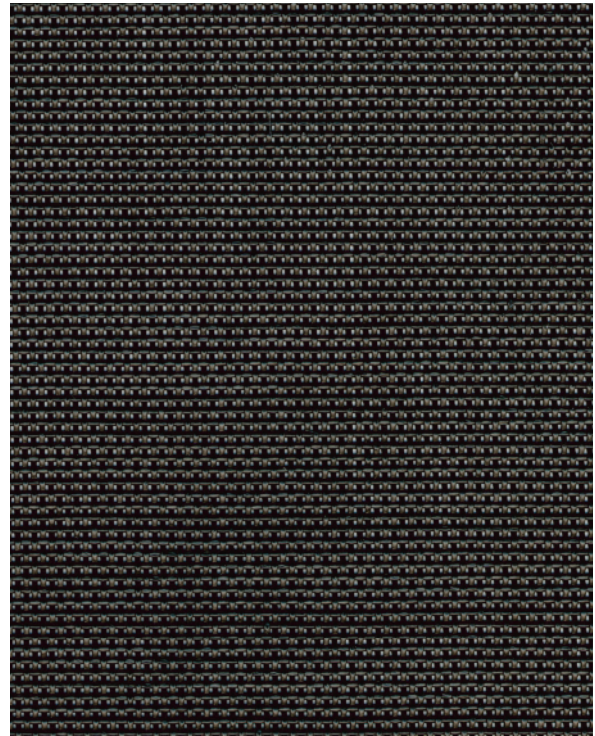
SUNTEX 80

SUNTEX 90

Black



Black

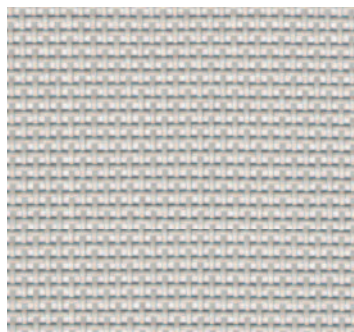


SUNTEX 80 and SUNTEX 90 are also available in the colors shown below.

Brown



Grey



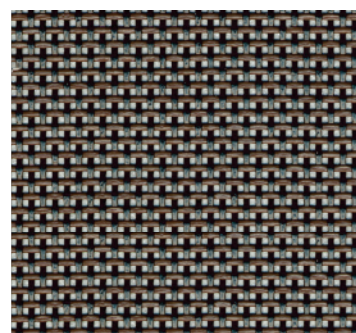
Beige



Stucco



Dark Bronze



*Colors may vary based on individual computer settings and should only be used for general reference.

SUNTEX® 80/90 SPECIFICATIONS

SunTex exterior shading fabric is made of strong vinyl-coated polyester. Developed originally for use in outdoor furniture, SunTex is mildew and fade resistant and needs only an occasional cleaning with mild soap and water. Ideal for use as a shading fabric on windows, doors and porches, SunTex is also pet resistant.

| | | |
|---------------------------------------|---|--------------------------------------|
| 80 FIRE CLASSIFICATION | California Technical Bulletin 117 NFPA 101 (Class B Rating) | IBC Section 803.1.1 (Class B Rating) |
| 90 FIRE CLASSIFICATION | California Technical Bulletin 117 NFPA 101 (Class A Rating) | IBC Section 803.1.1 (Class A Rating) |
| BACTERIA AND FUNGAL RESISTANCE | ASTM E 2180 Includes Microban antimicrobial additives | ASTM G21 |
| ENVIRONMENTAL CERTIFICATION | GREENGUARD Certified to these standards for low chemical emissions into indoor air during product usage | GREENGUARD Gold |
| SAFE USE | RoHS/Directive 2002/95/EC ANSI/WCMA A 100.1-2007 for lead content US Consumer Product Safety Commission Section 101 REACH (EC 1907/2006) compliant | |
| WARRANTY | 10-year exterior | |
| UV PROTECTION | Seal of Approval by the Melanoma International Foundation (MIF) for effectiveness in preventing sun damage to the skin or eyes (SunTex 90) | |

| SUNTEX® | 80 | 90 |
|--------------------------------|--|--|
| WIDTHS | 36", 48", 60", 72" and 96"; <i>120" available in Black, Brown, Dark Bronze and Stucco</i> 91.4 cm, 121.9 cm, 152.4 cm, 182.9 cm and 243.8 cm; <i>304.8 cm available in Black, Brown, Dark Bronze and Stucco</i> | 36", 48", 60", 72" and 96"; <i>120" in all colors except Grey</i> 91.4 cm, 121.9 cm, 152.4 cm, 182.9 cm and 243.8 cm; <i>304.8 cm in all colors except Grey</i> |
| ROLL LENGTH | 100 Linear Feet (30.48m); 120" (304.8cm) in 90 Linear Feet (27.43m) | 100 Linear Feet (30.48m); 120" (304.8cm) in 90 Linear Feet (27.43m) |
| COMPOSITION | 31% Polyester 69% Vinyl on Polyester | 31% Polyester 69% Vinyl on Polyester |
| MESH WEIGHT | 12.9 oz/yd ² 437.38 g/m ² | 16.5 oz/yd ² 559.44 g/m ² |
| FABRIC THICKNESS | 0.032 in 0.8128 mm | 0.035 in 0.889 mm |
| OPENNESS FACTOR | Approximately 25% | Approximately 10% |
| UV BLOCKAGE | Approximately 75% | Approximately 90% |
| BREAKING STRENGTH (LBS) | 269 Warp, 237 Fill | 378 Warp, 276 Fill |
| STIFFNESS (MG) | 445 Warp, 397 Fill | 424 Warp, 450 Fill |



P. O. Box 1700 • Tuscaloosa, Alabama 35403-1700 USA
 Phone: 205.345.2120 • FAX: 205.391.0799
 Toll Free USA/Canada: 1.800.221.5497
 phifer.com • ISO Registered



© SunTex is a registered trademark of PHIFER INCORPORATED.
 © MICROBAN is a registered trademark of Microban Products Company.
 ™ UL, the UL logos and the UL mark are trademarks of UL LLC.
 © PHIFER INCORPORATED V21 3009031